



Bayshore Bikeway – Barrio Logan Segment Construction Information Session

Dinara Ussenova, P.E. SANDAG Project Manager

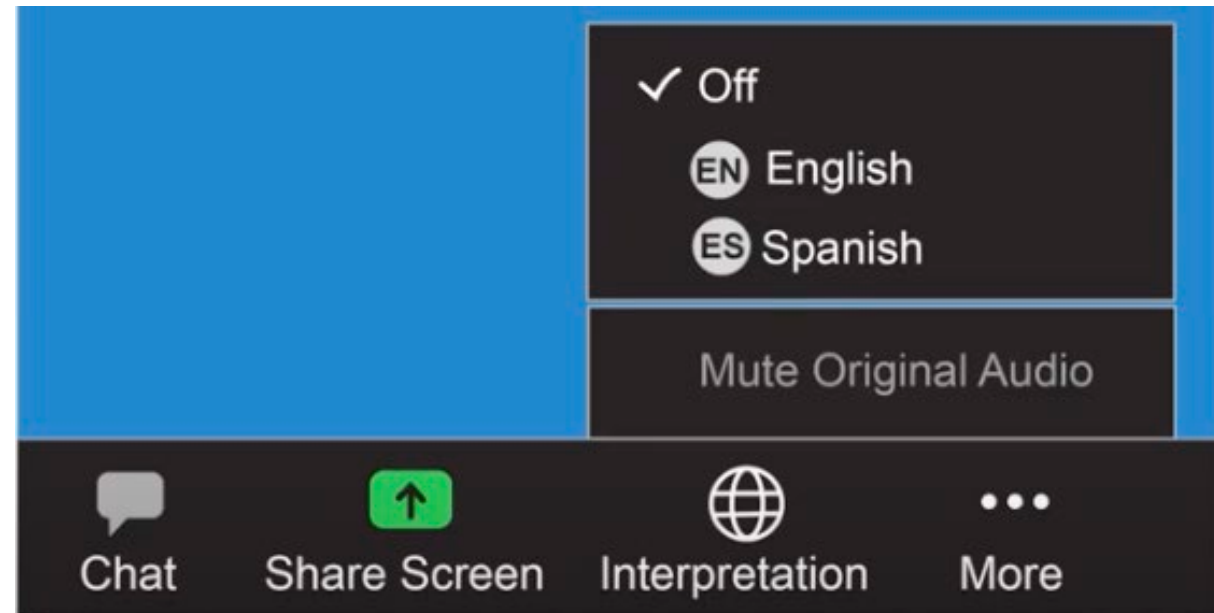
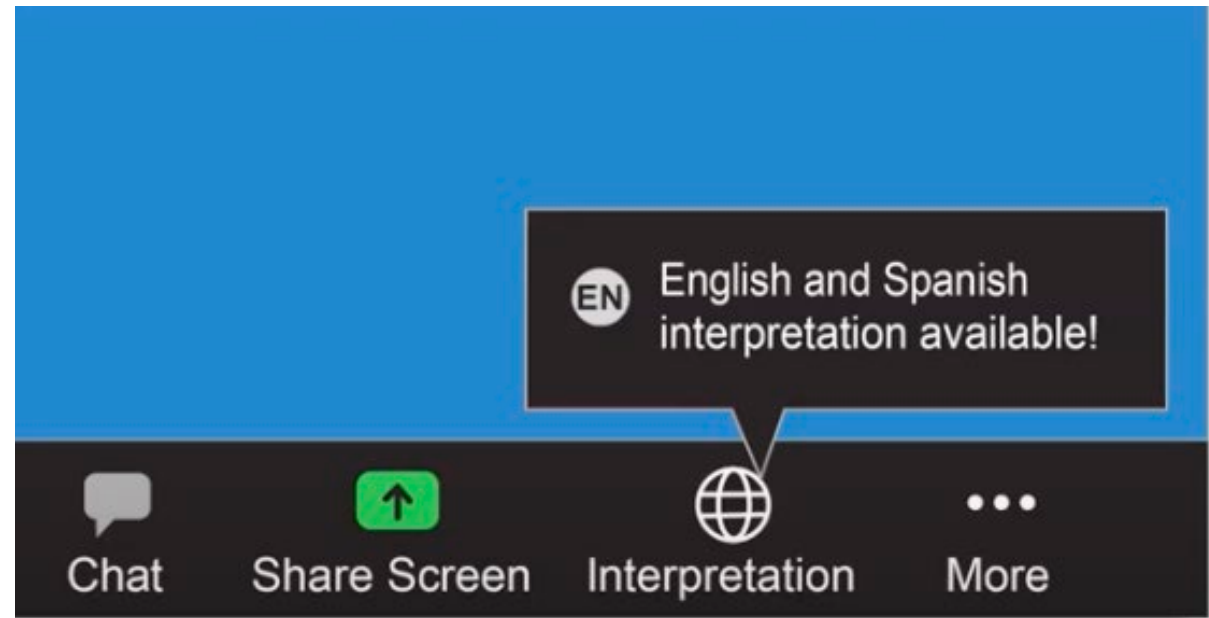
Stephen Fordham, P.E. SANDAG Construction Manager

Kirk Bradbury, P.E. SANDAG Consultant / Design Team

May 23, 2022

Interpretation

Spanish interpretation is available for all participants.



Our Commitment to Equity



Agenda

For More Information



SANDAG and the Regional Plan

**Bayshore Bikeway – Barrio Logan
Segment Project Overview**

What to Expect During Construction

Questions & Answers

Poll #1

How did you find out about this webinar?

1. Postcard Mailer
2. Email
3. Social Media
4. Word of Mouth
5. Other (type in chat!)

SANDAG 2021 Regional Plan



Biking as a Solution



SANDAG GO by BIKE — Progress Update Spring 2022

23 MILES BUILT



19 PROJECTS IN PROGRESS

4.5 MILES UNDER CONSTRUCTION

27 MILES NEARING CONSTRUCTION*
*REFLECTS PROJECTS IN THE FINAL DESIGN PHASE

San Diego Regional Bike Plan Early Action Program (EAP)	Planning	Environmental	Final Design	Construction	Open to Public
Inland Rail Trail: Phase 2					Early 2021
Coastal Rail Trail – Rose Creek					Mid-2021
Fourth and Fifth Avenue Bikeway					Early 2022
Georgia – Meade Bikeway					Early 2022
Landis Bikeway					Early 2022
Pershing Bikeway					2024
Bayshore Bikeway – Barrio Logan Segment					2024

Poll #2:

Which SANDAG bikeway project milestone are you most looking forward to?

1. This one! (Bayshore Bikeway – Barrio Logan Segment Groundbreaking)
2. Border to Bayshore Bikeway Groundbreaking
3. Imperial Avenue Bikeway Groundbreaking
4. I don't know about any of these projects

Project Overview & Features

Bayshore Bikeway – Barrio Logan Segment

Bayshore Bikeway – Barrio Logan Segment



Poll #3: How often do you travel along Harbor Drive?

Daily, Weekly, or Never

Poll #4: What is your trip purpose?

Work, Leisure, Errands, or Other

Before

Harbor Drive / Cesar Chavez Parkway

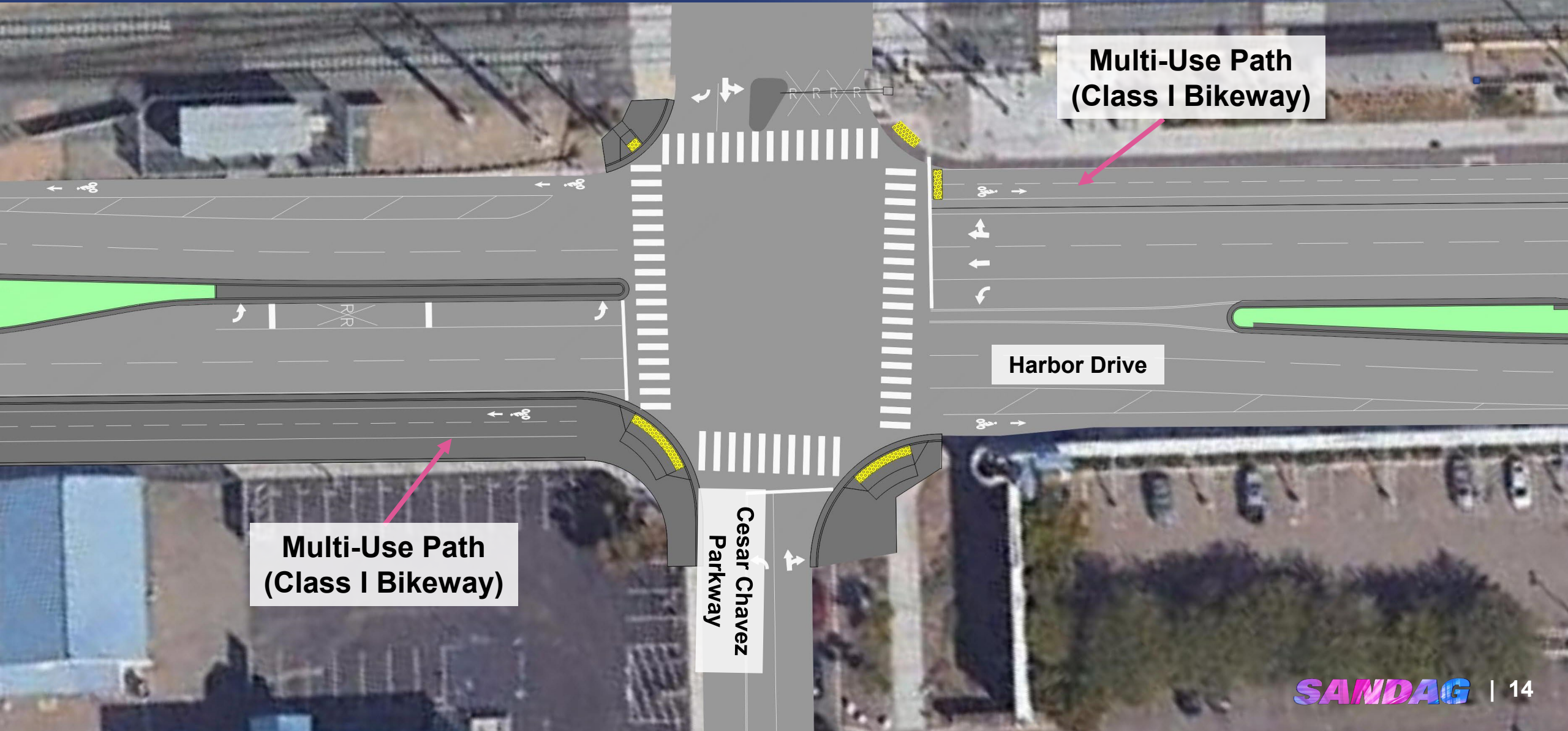


Harbor Drive

Cesar Chavez
Parkway

After

Harbor Drive / Cesar Chavez Parkway



Before

Harbor Drive / BNSF Railroad Grade Crossing

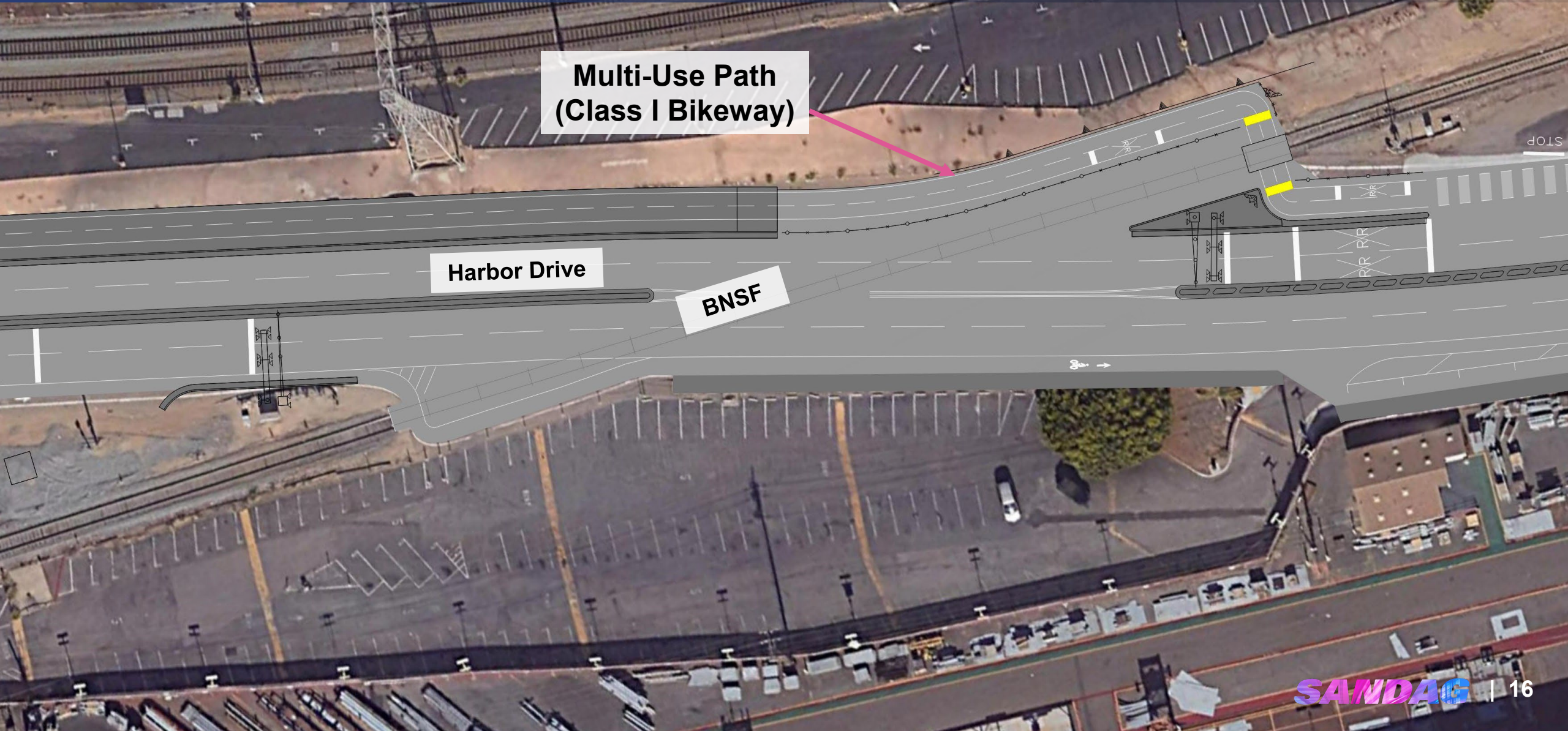


Harbor Drive

BNSF

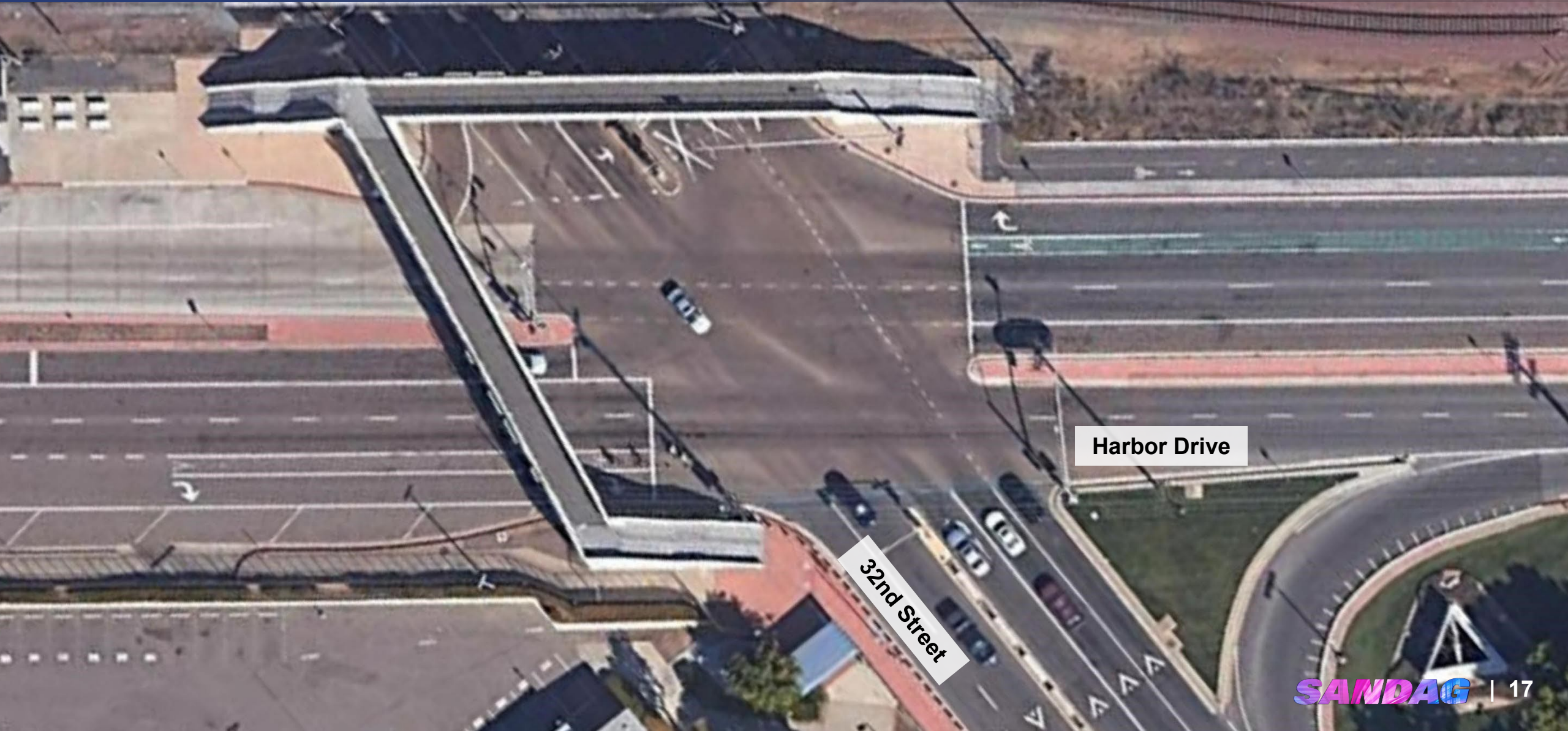
After

Harbor Drive / BNSF Railroad Grade Crossing



Before

Harbor Drive / 32nd Street



Harbor Drive

32nd Street

After

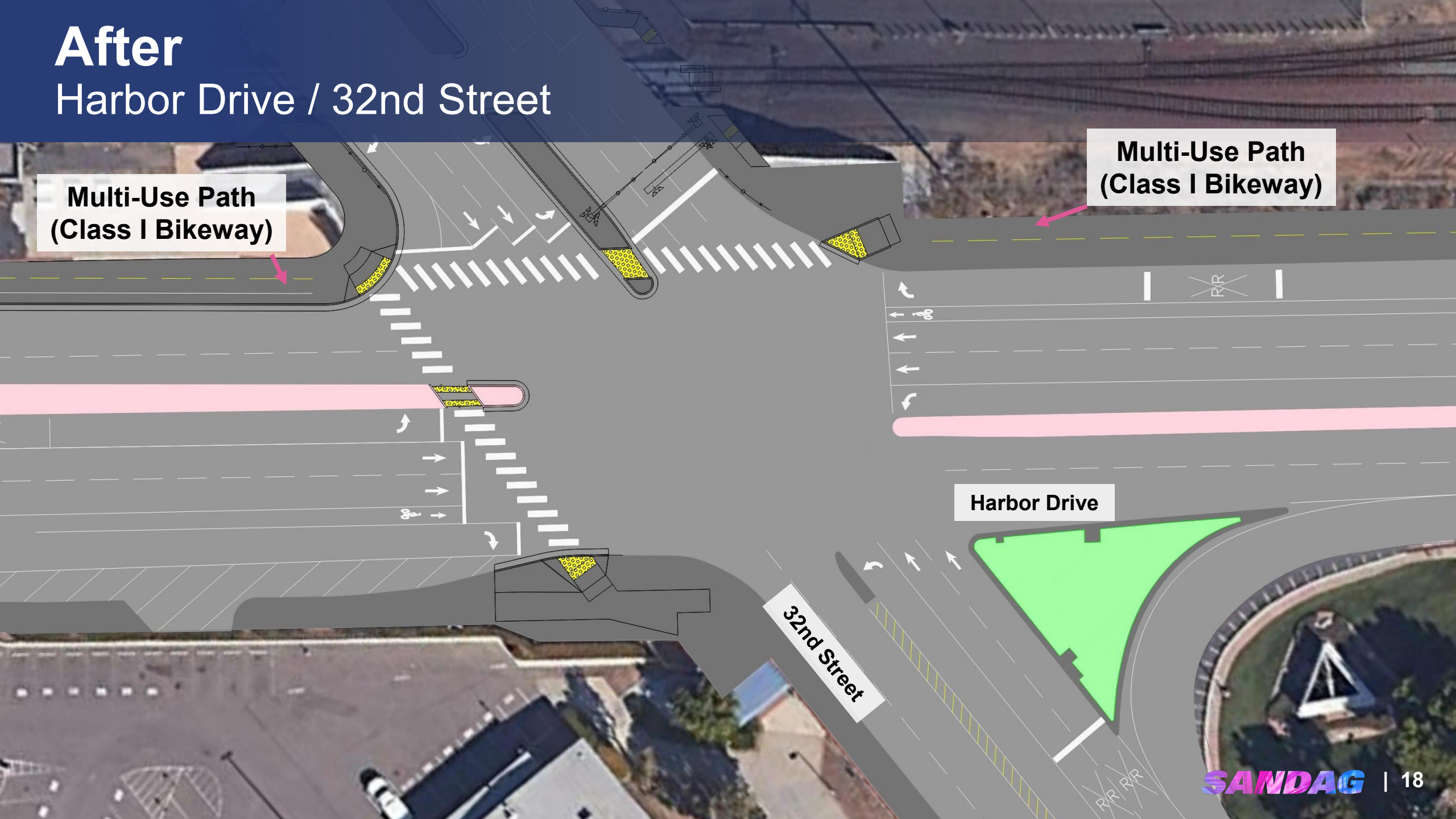
Harbor Drive / 32nd Street

**Multi-Use Path
(Class I Bikeway)**

**Multi-Use Path
(Class I Bikeway)**

Harbor Drive

32nd Street

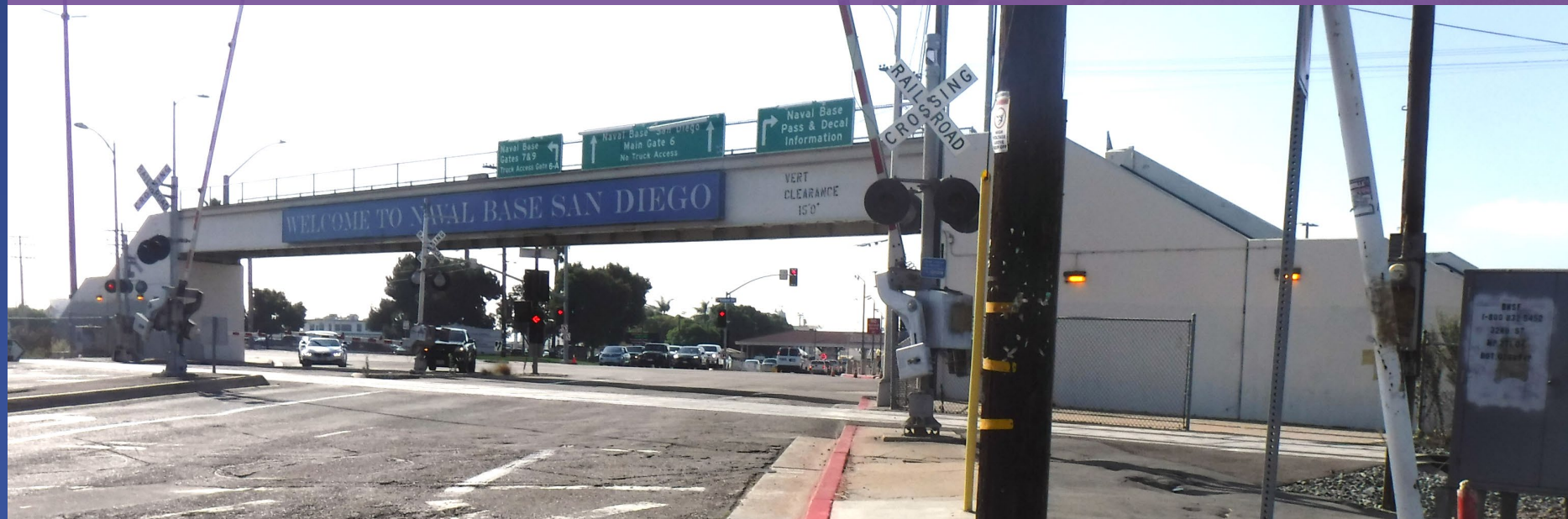


Pedestrian Bridge Removal

Harbor Drive /
32nd Street –
Existing
Conditions



LOOKING EAST – Existing Conditions



LOOKING SOUTH – Existing Conditions

Before & After

Harbor Drive at Tenth Avenue Marine Terminal Bridge (TAMT)

Existing Conditions

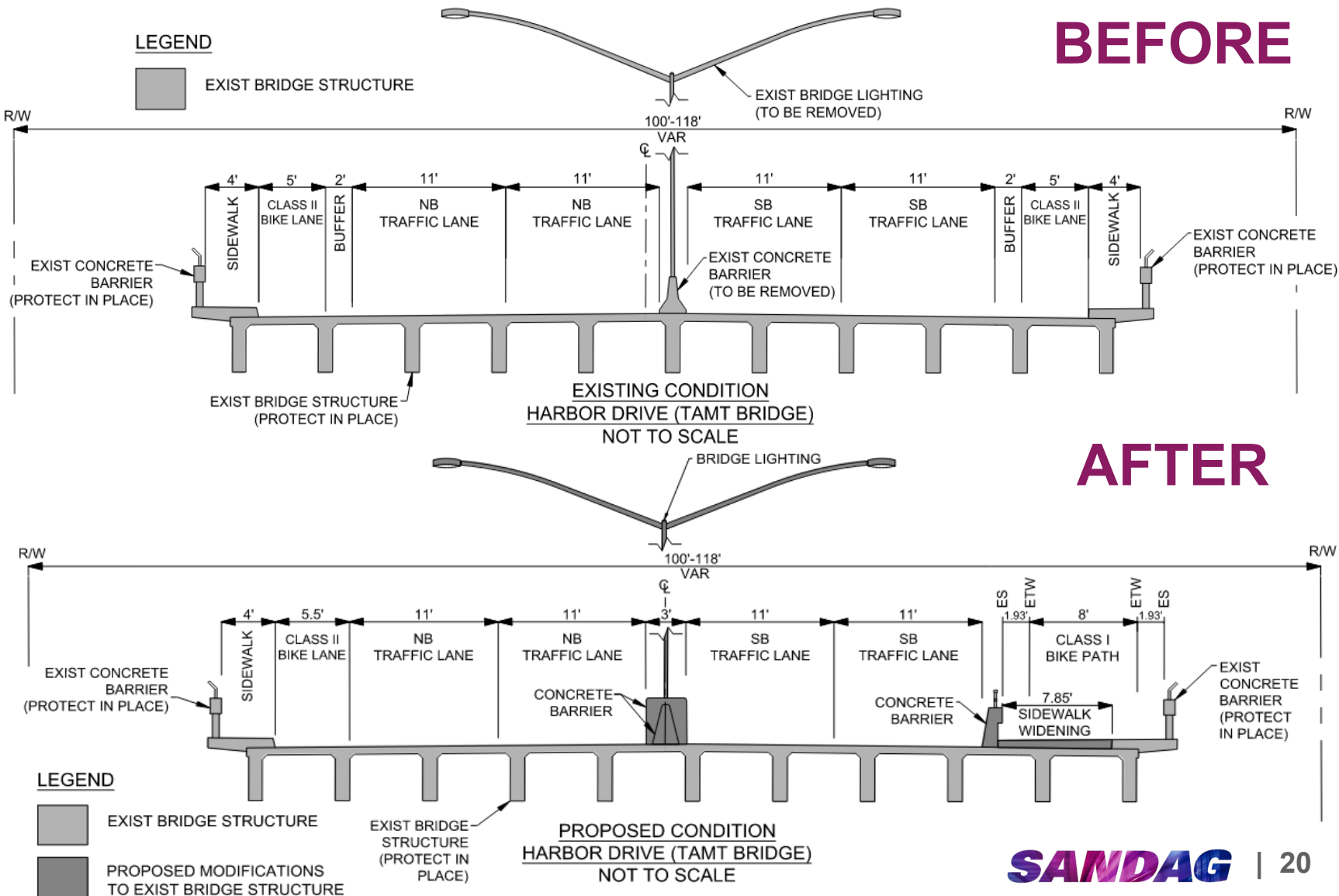


Looking South



Looking North

2018. 1. 6



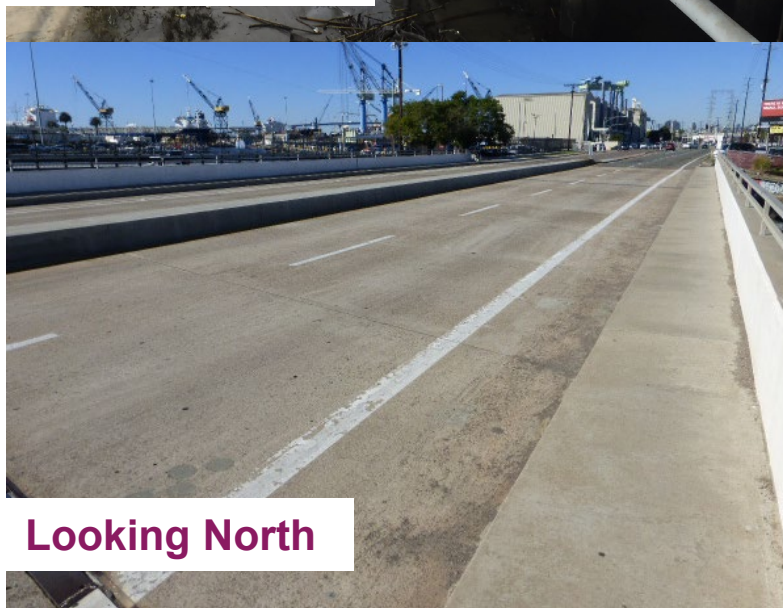
Before & After

Harbor Drive at Chollas Creek Bridge

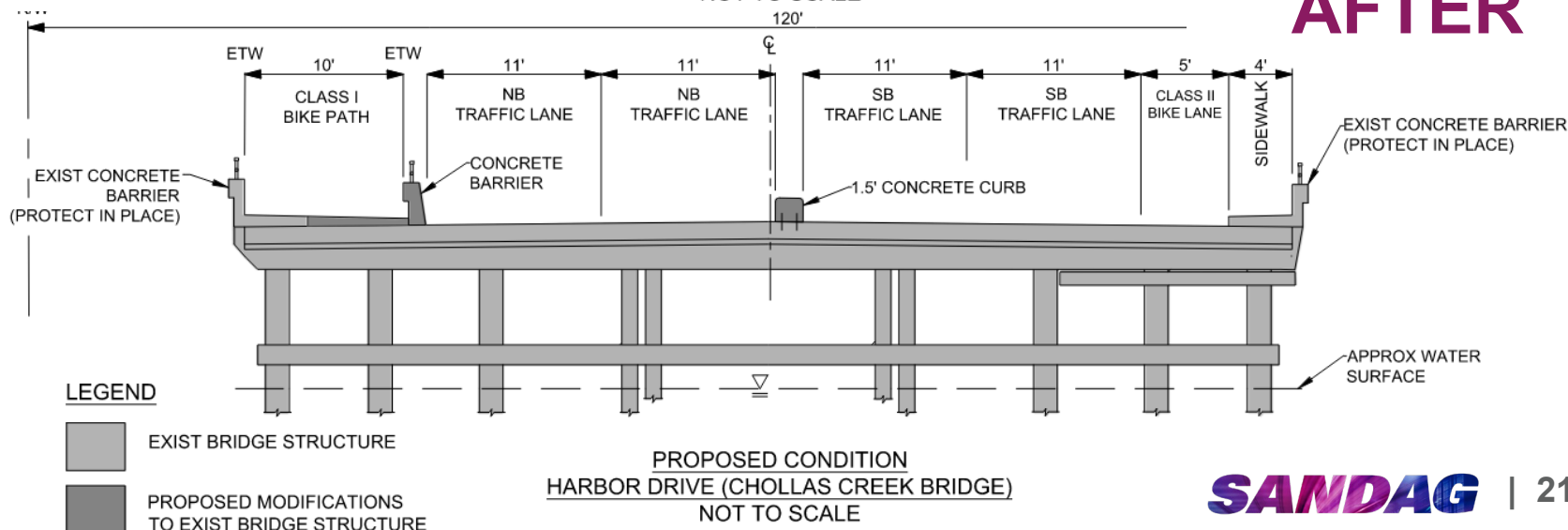
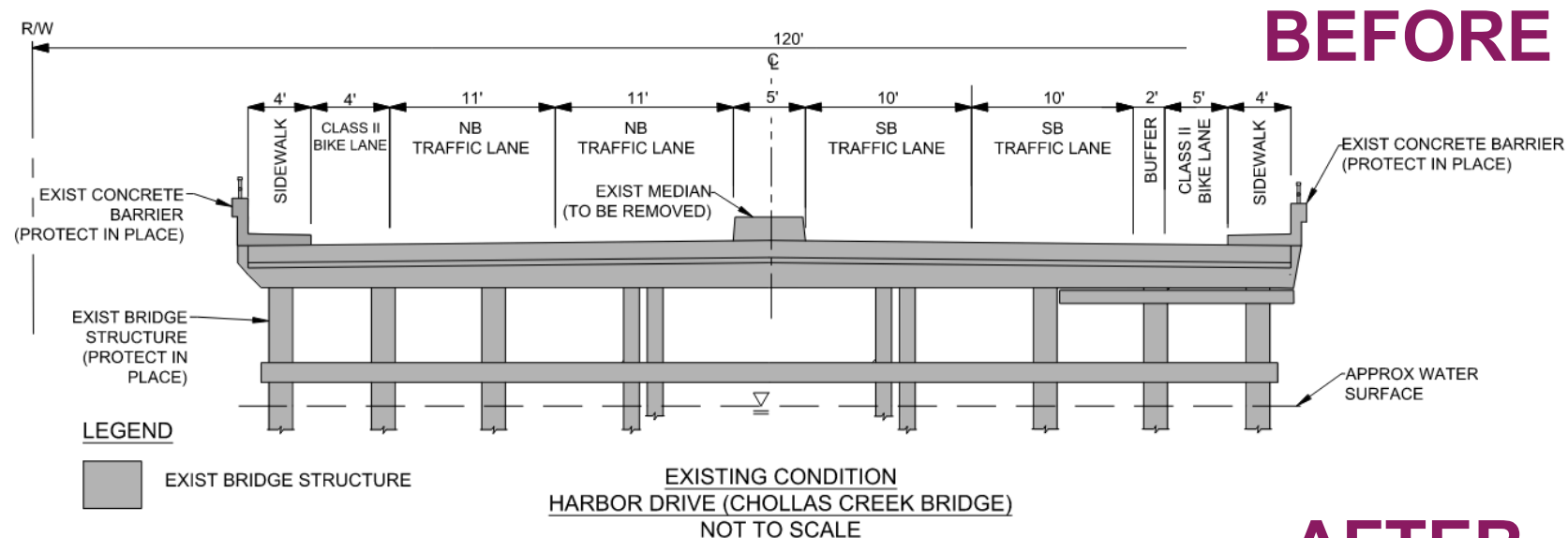
Existing Conditions



Looking South



Looking North



Landscaping Enhancements



QUERCUS SUBER
Cork Oak



**PODOCARPUS
GRACILIOR**
Fern Pine



**PRUNUS
CERASIFERA**
Flowering Plum

What to Expect During Construction



- Traffic Control



- Detours



- Noise



- Lights at Night



- Bike Lane and Vehicle Lane Closures

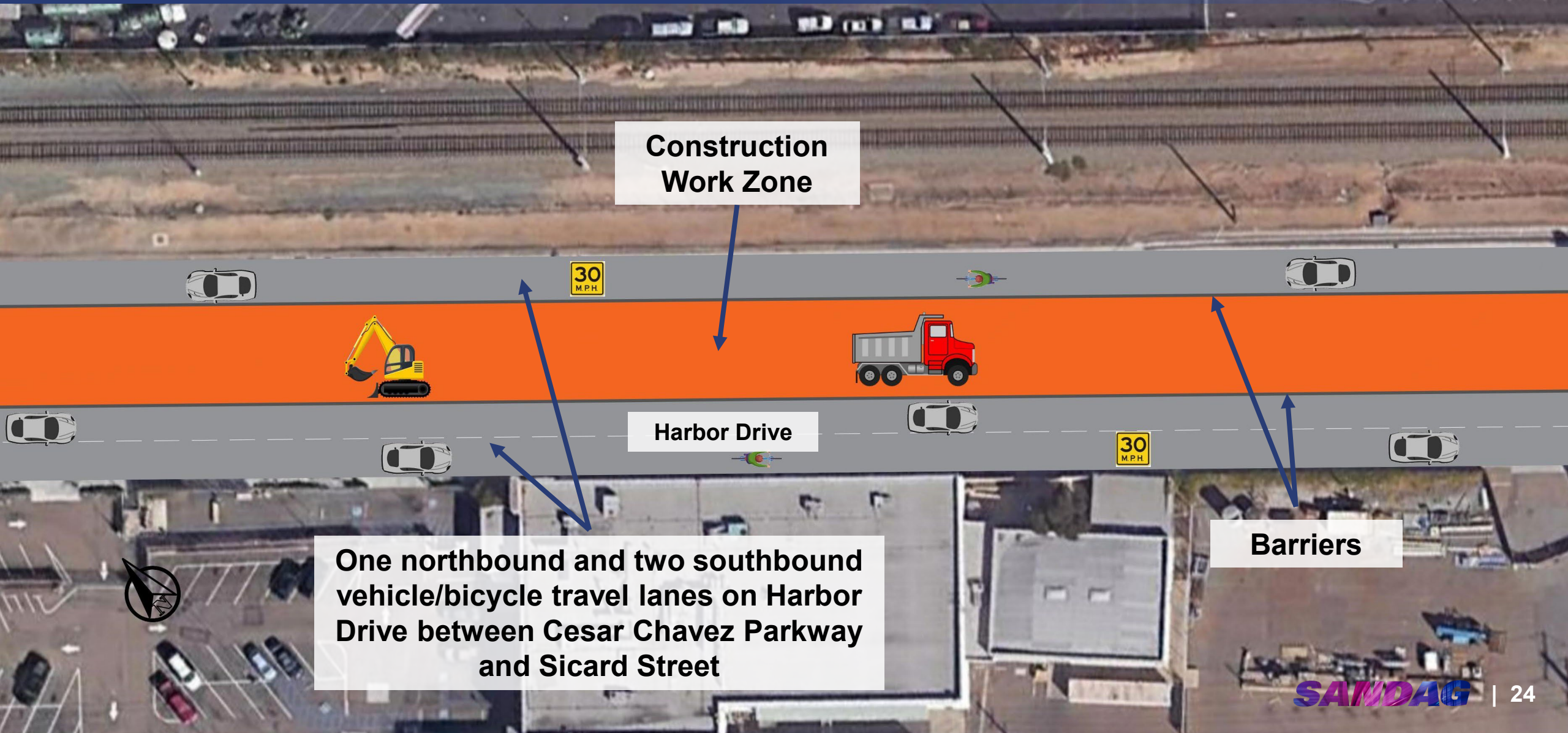


- Flaggers



- Parking Restrictions

Example Traffic Control Conditions



Construction
Work Zone

30
MPH

Harbor Drive

30
MPH

Barriers

One northbound and two southbound
vehicle/bicycle travel lanes on Harbor
Drive between Cesar Chavez Parkway
and Sicard Street

Stay in the know about the Bayshore Bikeway

Sign up for construction email updates at sandag.org/subscribe

➡ Explore our website
KeepSanDiegoMoving.com/BayshoreBikeway

🔍 Follow us on social media:
[@SANDAGregion](https://twitter.com/SANDAGregion) [@SANDAG](https://twitter.com/SANDAG)

✉ Email: GObyBIKE@sandag.org

SCAN HERE



SANDAG

Questions & Answers

To submit a question, click the chat icon at the bottom of the Zoom screen and enter your question into the chat box.

Stay in the know about the Bayshore Bikeway

Sign up for construction email updates at sandag.org/subscribe

➡ Explore our website
KeepSanDiegoMoving.com/BayshoreBikeway

🔍 Follow us on social media:
[@SANDAGregion](#) [@SANDAG](#)

✉ Email: GObyBIKE@sandag.org

SCAN HERE



SANDAG